



COMPASS[®] CC



- The **Agar COMPASS[®] cc** method allows the **enumeration of *E. coli* and coliforms in 24 hours** in drinking water.
- The **COMPASS[®] cc Agar** media enables the detection of two specific enzyme activities of *E. coli* and coliforms :
 - β -galactosidase
 - β -glucuronidase



- This method is certified by AFNOR certification in relation to **reference method ISO EN 9308-1 (2000)** : Water quality - Detection and enumeration of *Escherichia coli* and coliform bacteria - Part 1: Membrane filtration method .



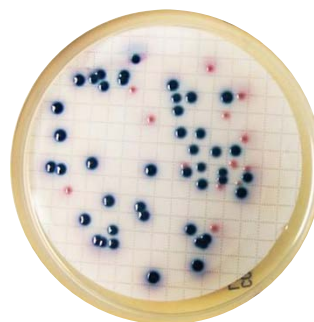
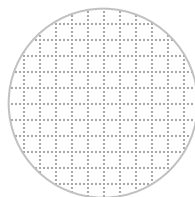
BKR 23/08-06/12
Méthodes alternatives
d'analyse pour l'eau
www.afnor-validation.org



Water sample
(100 ou 250 ml)



Place the
membrane
front grid to
the top



BLUE VIOLET
colonies : *E. coli*

β -galactosidase +
 β -D-glucuronidase +

PINK colonies :
Coliforms

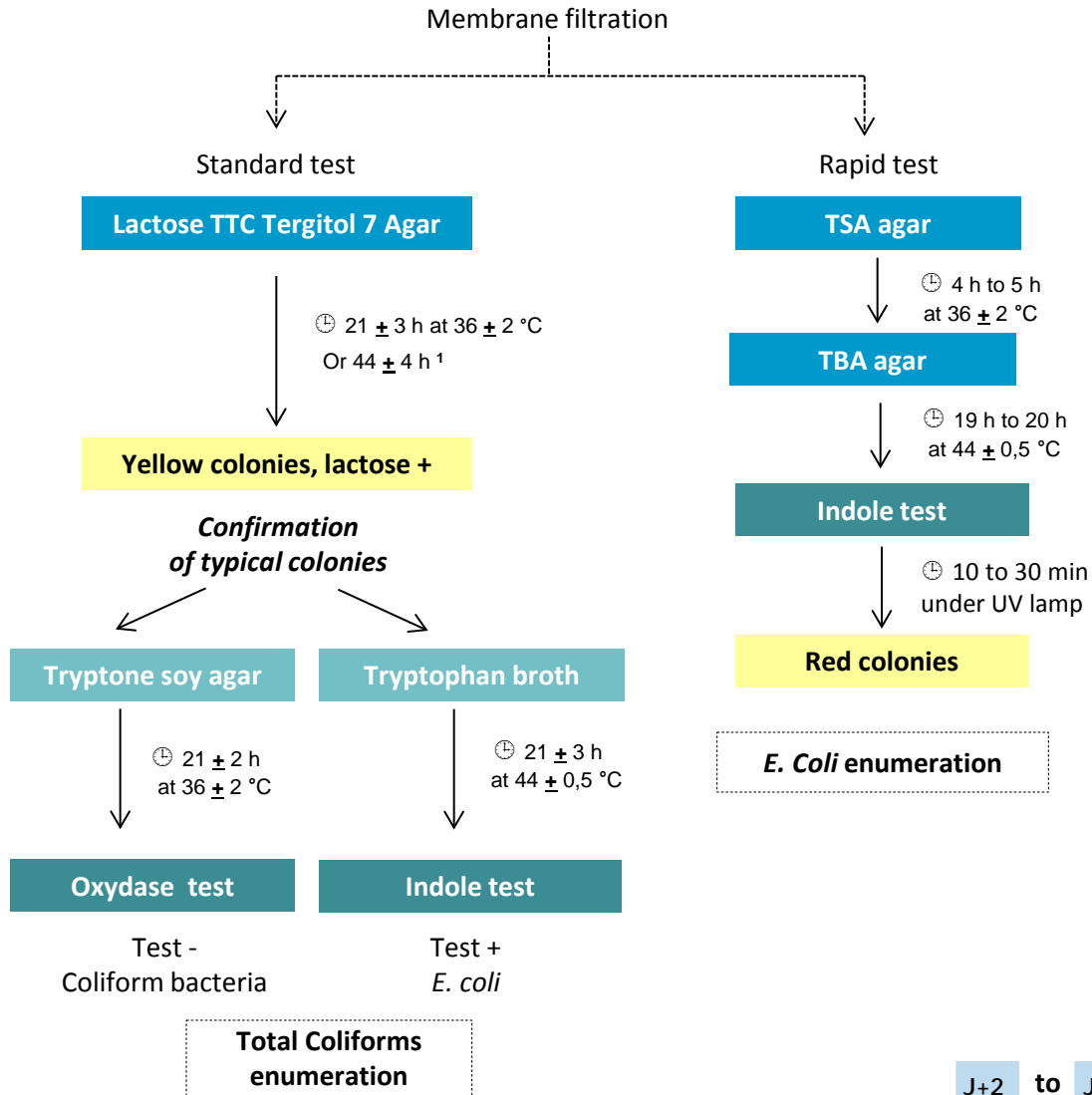
β -galactosidase +
 β -D-glucuronidase -

FILTRATION

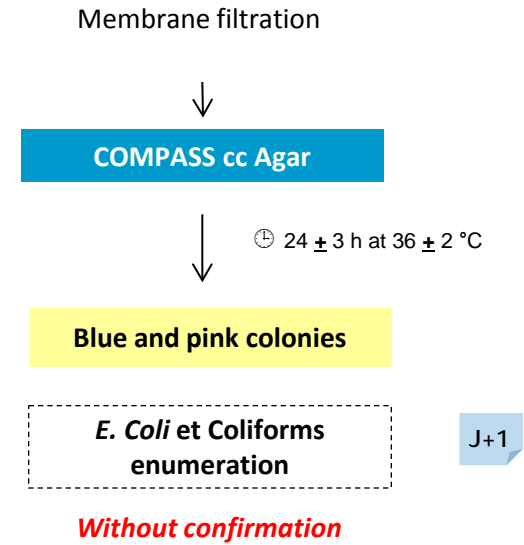
PLATING
24 HEURES \pm 3H AT $36 \pm 2^\circ\text{C}$

ENUMERATION
WITHOUT CONFIRMATION

Reference method
NF EN ISO 9308-1 : 2000



Simplified method
COMPASS® cc Agar



J+1

J+2 to J+3

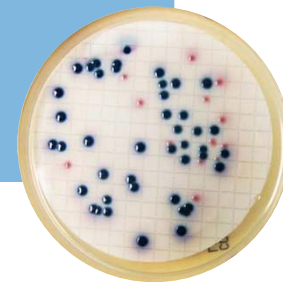
¹ The incubation duration up to (44 ± 4) h may increase the test sensitivity



COMPASS[®] cc Method

Good performance of the media :

- Expression of 2 specific enzyme activities :
β-galactosidase and β-D-glucuronidase.
- Total inhibition of secondary flora

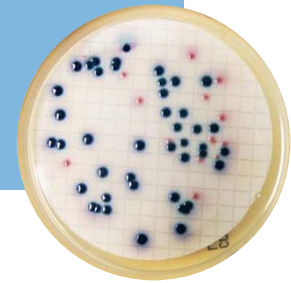




COMPASS[®] cc Method

Good visual distinction between :

- **BLUE VIOLET** colonies (*E. coli*)
- and **PINK** colonies (coliforms)





COMPASS[®] cc Method

A quick and easy-to-use method :

- Simultaneous enumeration of *E. coli* and coliforms
- Results in 24 hours without confirmation
- Time saving in relation to the 2 days reference method

COMPASS[®] cc Method

1 step

Reference method : NF EN ISO 9308-1 : 2000

8 steps

J+1

J+2

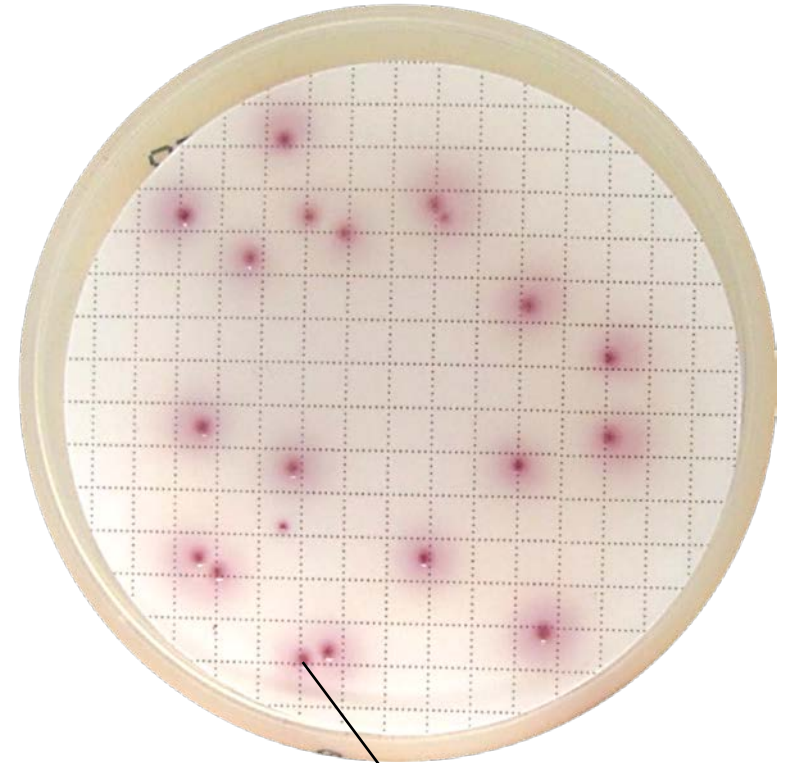
J+3

COMPASS[®] cc



Escherichia coli

Characteristic colony :
blue-violet color



Other coliforms

Characteristic colony :
pink color

COMPASS[®] cc Agar
BM15308 - 20 Boîtes de Petri (Ø 55 mm)

COMPASS[®] cc Agar (Base)
BK210HA - 500 g bottle

COMPASS[®] cc Agar selective supplement
BS08408 – 10 vials qsf 500 mL