

REVEAL[®] 3-D FOR PEANUT

PLEASE READ KIT INSTRUCTIONS COMPLETELY BEFORE PERFORMING TEST.



Materials provided:

10 orange test devices
10 sample tubes and caps
10 sachets of Type 9 extraction buffer
10 sterile swabs
1 bottle swab wetting solution

Materials required but not provided (for food extraction only):

8504 3-D Food Buffer
9381 50 mL graduated tubes

Product number: 901041L

Rinse/Food: 5 ppm peanut

Swab: 3–4 µg/100 cm² peanut

Testing time: 5 minutes

Approvals: AOAC RI 111901

Call 800.234.5333 to order or visit NEOGEN.com

Rinse Sampling



1 Open Type 9 extraction buffer sachet and add to a sample tube.



2 Add 0.25 mL of sample to the sample tube.

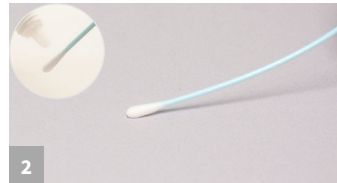


3 Secure cap and shake for 1 minute. Proceed to Rinse/Swab Testing step #1.

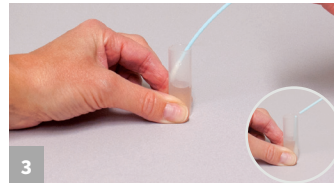
Swab Sampling



1 Open Type 9 extraction buffer sachet and add to a sample tube.



2 Gather the sample. For dry surfaces moisten with swab wetting solution. Do not premoisten for wet surfaces.



3 Return the swab to the extraction buffer and break off into the tube.

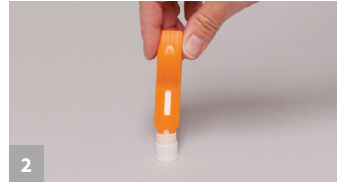


4 Secure cap and shake for 1 minute. Proceed to Rinse/Swab Testing Step #1

Swab/Rinse Testing



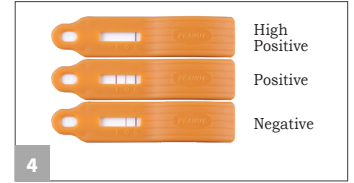
1 Remove the lid and fill with liquid from the tube.



2 Dip the Reveal 3-D device into the liquid within the lid, ensuring the liquid saturates the cavity.



3 When the liquid is seen running up the test window, place the device on a flat surface. Allow the test to develop for 5 minutes.



4 Interpret the results.

Food Sample Extraction & Testing



1 Add 20 mL (18 mL for liquid samples) of Reveal 3-D Food Buffer into 50 mL tube.



2 Add 2 g (2 mL for liquid samples) of sample to tube



3 Secure cap and shake for 1 minute.



4 With the tube tilted at approximately a 45 degree angle, dip the device into the tube; ensure that the cavity is saturated with the liquid. Move to steps 3–4 of previous section.

